

2024 Upgrade Program Highlights Flyer



www.asimn.com
800-262-6025



Promotion overview



Objective

This program is intended to upgrade the technology of the end-users by exchanging their current competitor tools to Walter product. The end-user receives the replacement tool holder free of charge with the minimum required purchase of inserts. **To qualify, the Channel or Walter FSE must take possession of competitor's product and discard.**



Tools included in Upgrade Program

- Indexable milling
- Parting and grooving
- Indexable drilling

Minimum required purchase of Inserts

Here is the minimum required purchase of inserts to qualify for a free replacement tool is:

Milling:

10 inserts per cutter body pocket

Example: End mill has 3 inserts (Z=3), $3 \times 10 = 30$ inserts required to purchase

(See milling family for requirements by sku)

Parting/Grooving:

No coolant through = **10 inserts**

Coolant through tool = **20 inserts**

(See grooving for requirements by sku)

Drilling:

D4120 series = **20 inserts per drill body**

D4140 series = **4 inserts per drill body**

(See drilling for requirements by sku)

Walter FSE Process

1. Based on application, select best product family
2. Identify cutter body
3. Select grade and chip breaker of insert
4. Determine minimum number of inserts required
5. Secure order/remove competitor product

Channel Partner Process

- Channel orders the bodies and required inserts from Walter
- Channel Partner enters the Promo Code with the order: **WalterUP**

Xtra-tec® XT



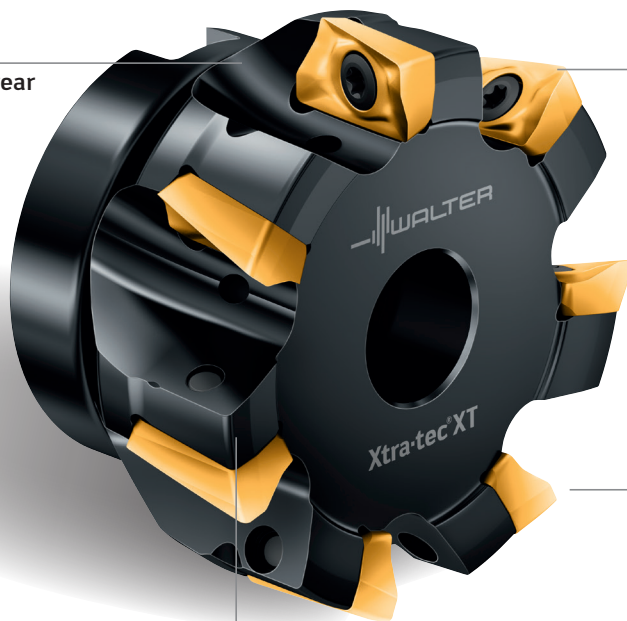
Performance and reliability in equal measure - a unique experience

What to determine

- Do you use indexable milling cutters currently?
- Would an increase in productivity of at least 20% be of interest to you?
- How would you like to consolidate your inventory of milling inserts?
- Can I bring a cutter in for you to test?

Protected against wear by a special surface treatment

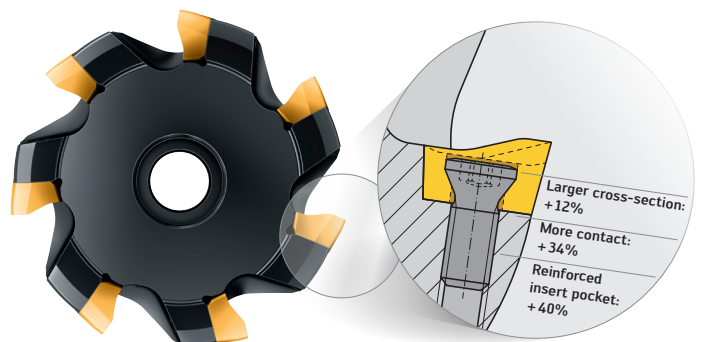
Precise 90° shoulder



Positive, very soft cutting action

Maximum stability

Click here to order Xtratec XT tools



10 inserts per cutter body pocket
Example - Indexable end mill has 3 pockets (Z=3):
3x10=30 inserts required to receive free cutter body

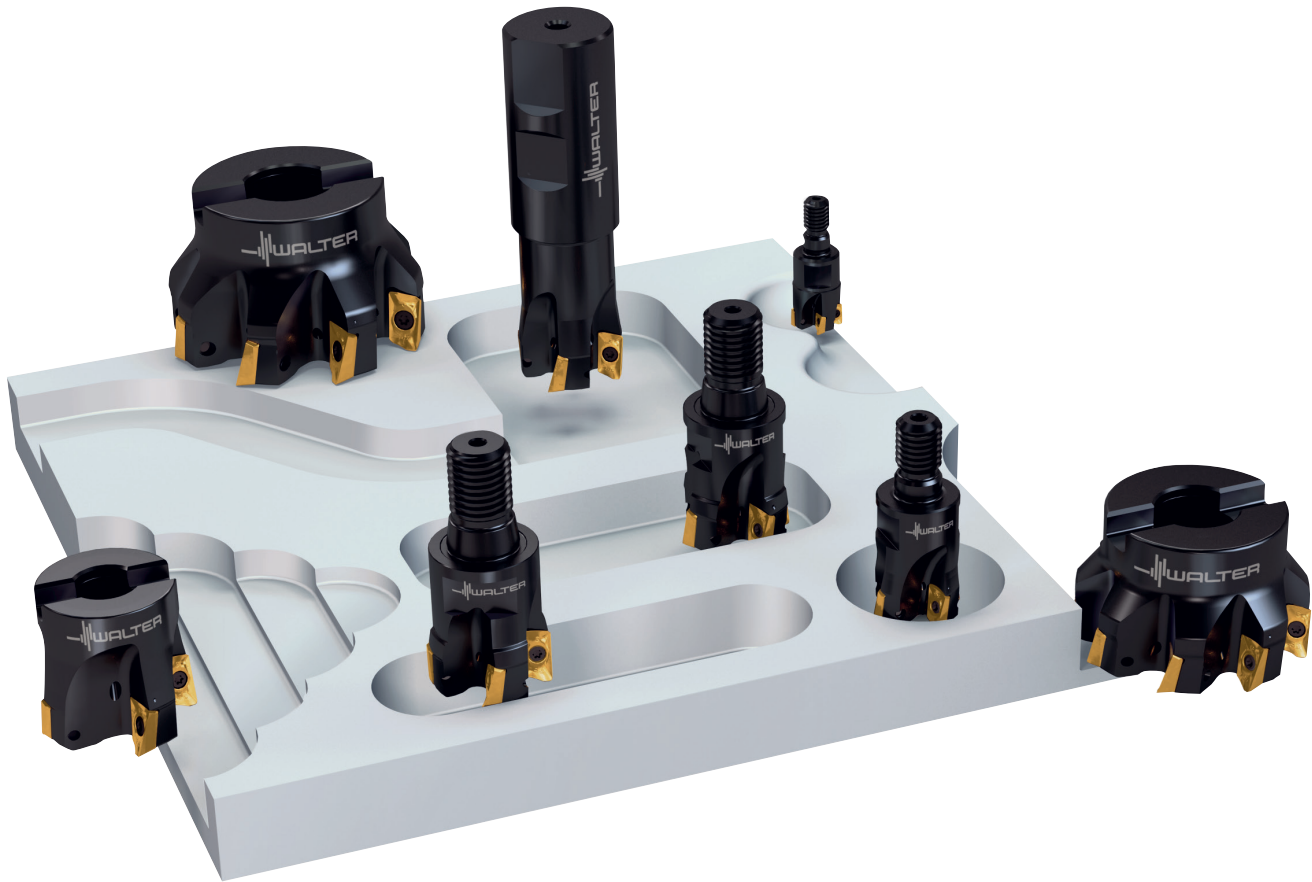
Contact your local Walter FSE for requirements by
SKU
USE PROMO CODE: WalterUP



www.asimn.com
800-262-6025

Performance and reliability extend your perspective.

Better performance, greater process reliability: The latest generation in the successful range of Walter milling tools not only meets both these requirements but takes them to a whole new level. These two defining characteristics, evident in equal measure, are the product of an innovative and pioneering development process that is opening up a completely new perspective on productivity. The name alone means business: XT stands for Xtended Technology.



New pocket position design

More contact

- The smaller clearance angle of the indexable inserts results in a larger contact surface, which reduces surface pressure.

Reinforced insert pocket

- The optimised position of the insert pocket makes it more resilient and enables longer screws to be used.

Larger cross-section

- The larger insert cross-section surrounding the indexable insert hole ensures far higher stability.

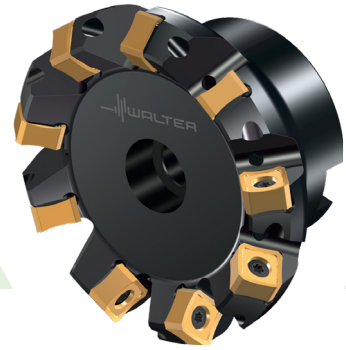


Powered by:
Tiger-tec® Gold

walter-tools.com/us

Xtra-tec® XT M5009

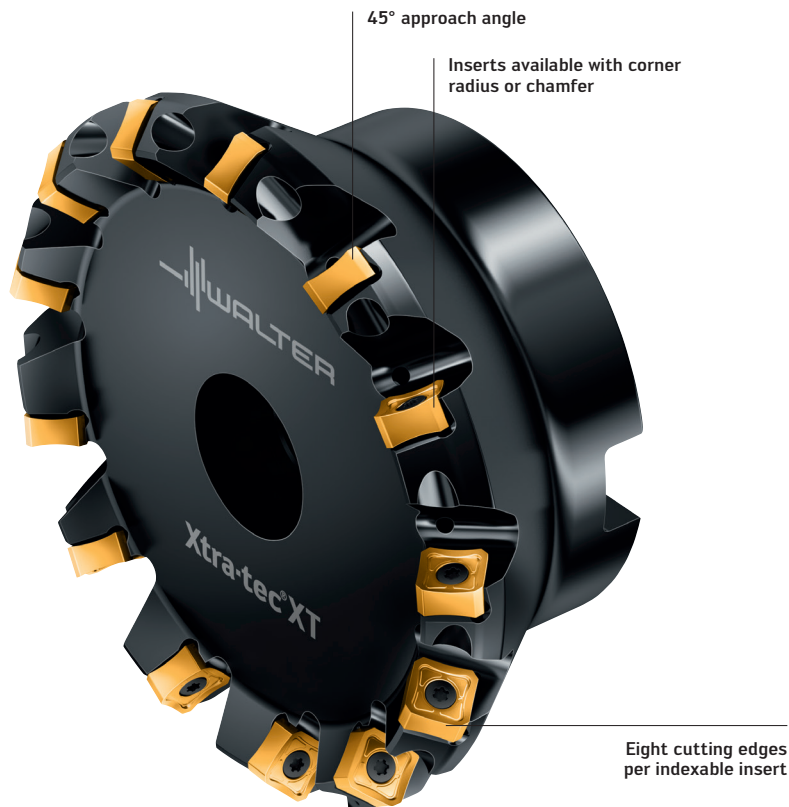
Small indexable inserts,
great productivity



What to determine

- What tools are you currently using to rough your parts?
- Do you need more productivity with this tool?
- Is your shoulder mill using the latest insert coating technology?
- Would you like to rough and finish with the same tool?
- Can I bring one in for you to try?

Powered by:
Tiger-tec® Gold



Click here to
order M5009
tools

10 inserts per cutter body pocket

Example - Indexable end mill has 3 pockets (Z=3):
3x10=30 inserts required to receive free cutter body

Contact your local Walter FSE for requirements by
SKU

USE PROMO CODE: WalterUP



www.asimn.com
800-262-6025

Xtra-tec® XT M5130/M5137

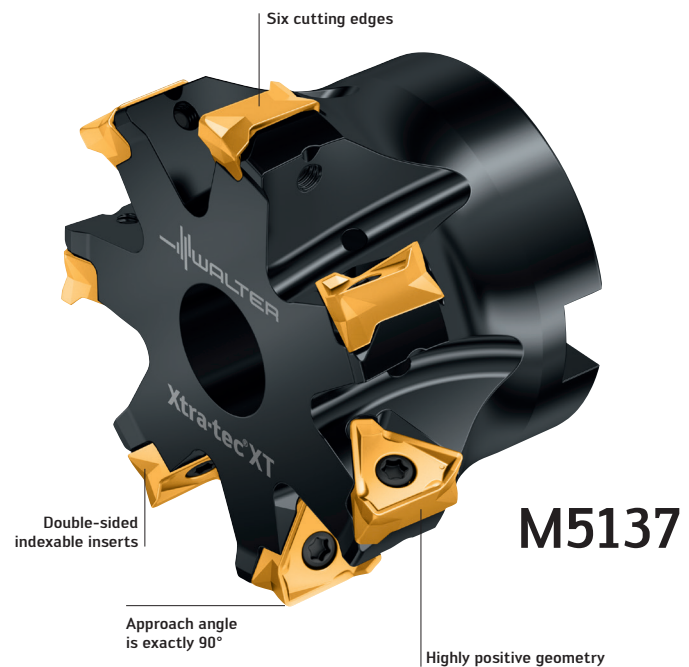


Performance and reliability extend your perspective

What to determine

- Are you finishing with a 90 deg shoulder mill?
- Do you need more productivity with this tool?
- Is your shoulder mill using the latest insert coating technology?
- Do you need an easy system to generate your cutting data?
- Can I bring one in for you to try?

Powered by
Tiger-tec® Silver
Tiger-tec® Gold



10 inserts per cutter body pocket
Example - Indexable end mill has 3 pockets (Z=3):
3x10=30 inserts required to receive free cutter body

Contact your local Walter FSE for requirements by SKU
USE PROMO CODE: WalterUP



www.asimn.com
800-262-6025

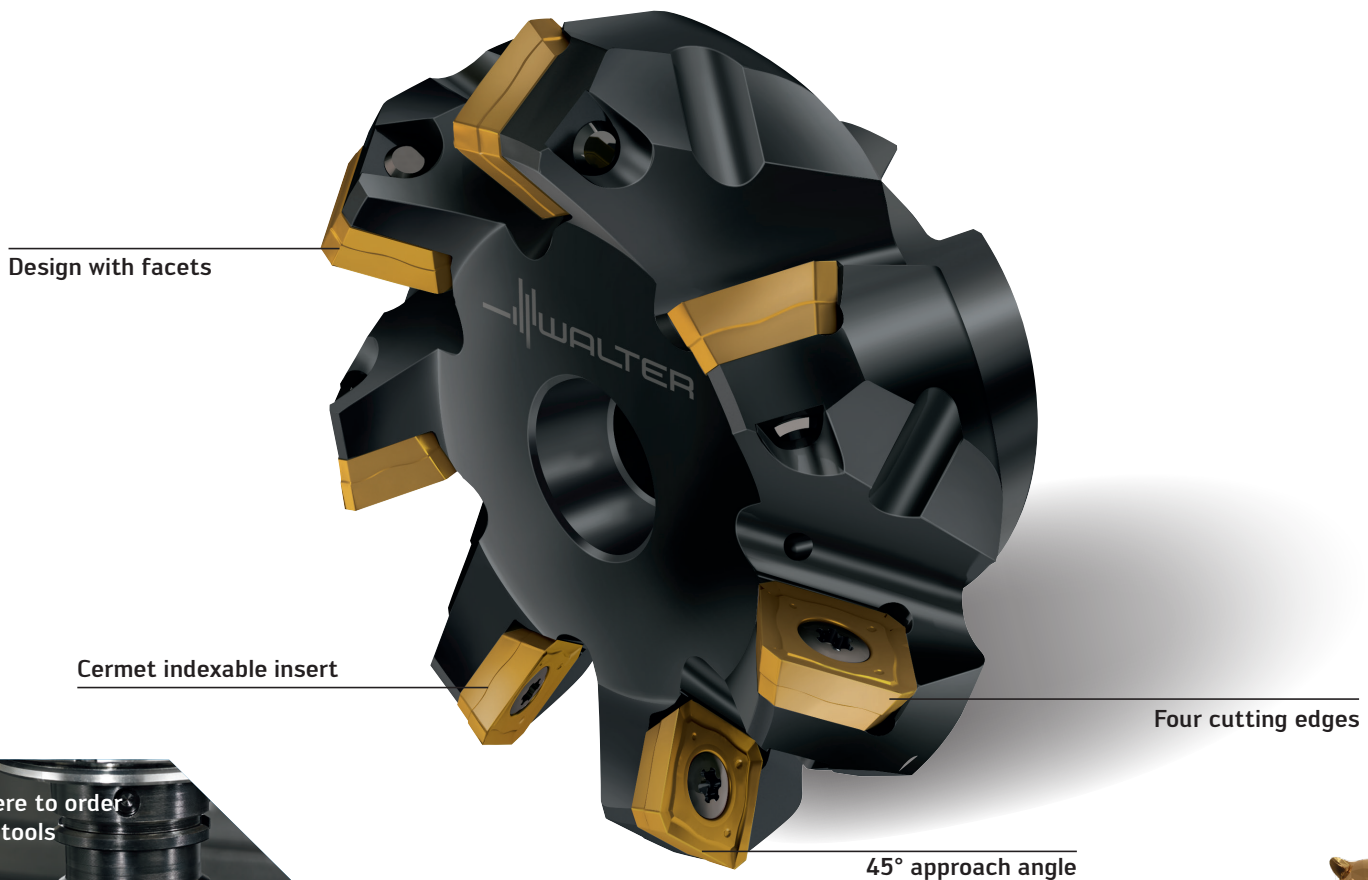
M4000



Engineered for more milling applications than ever before

What to determine

- Do you use indexable milling cutters currently?
- Would an increase in productivity of at least 20% be of interest to you?
- How would you like to consolidate your inventory of milling inserts?
- Can I bring a cutter in for you to test?



Design with facets

Cermet indexable insert

Four cutting edges

45° approach angle



[Click here to order M4000 tools](#)

Powered by:
Tiger-tec® Gold
Tiger-tec® Silver



10 inserts per cutter body pocket
 Example - Indexable end mill has 3 pockets (Z=3):
 3x10=30 inserts required to receive free cutter body

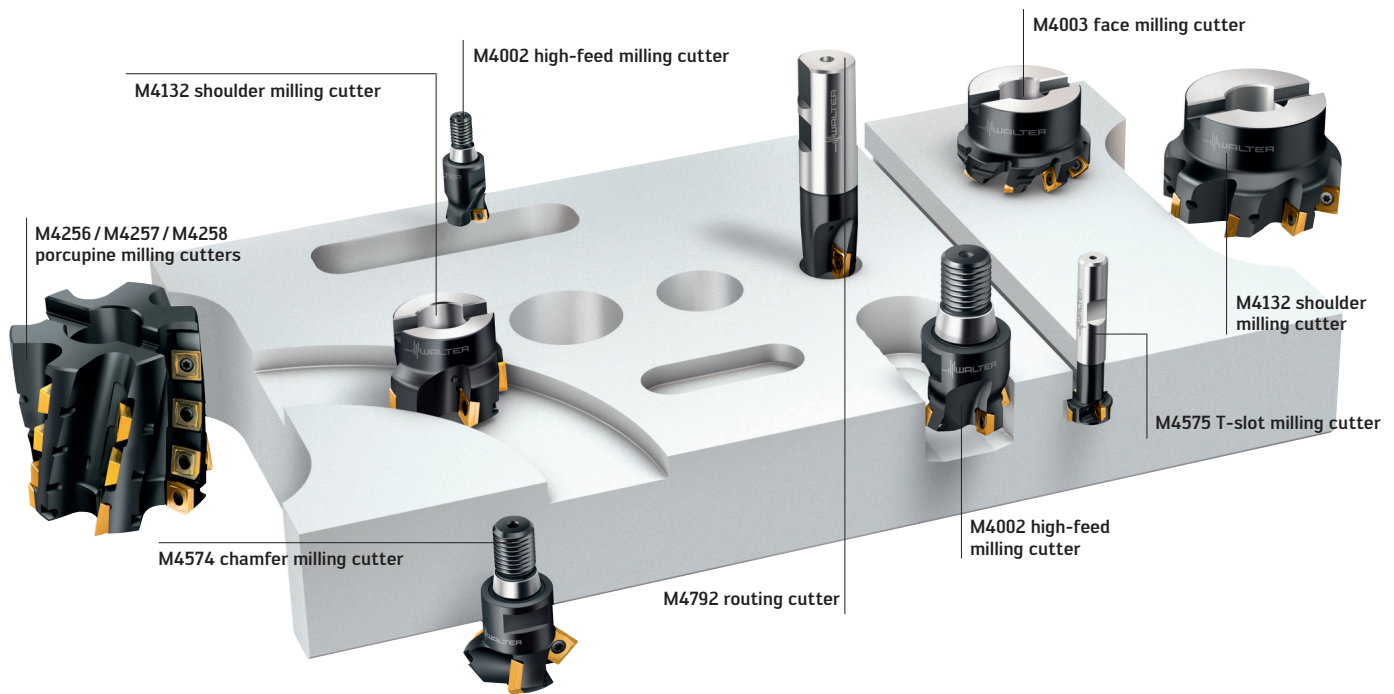
Contact your local Walter FSE for requirements by
 SKU
USE PROMO CODE: WalterUP



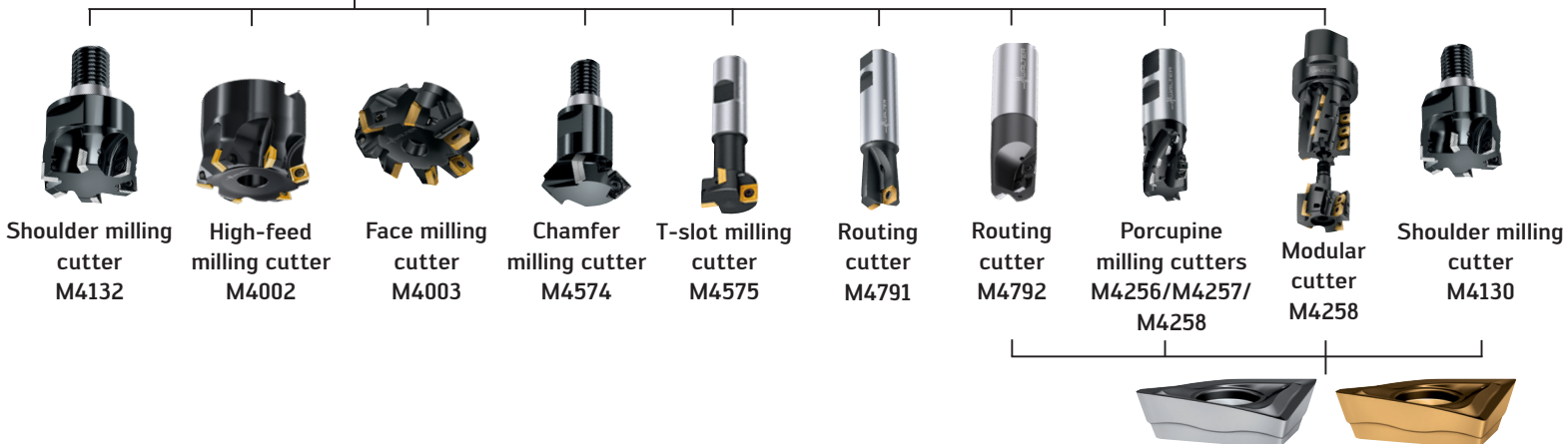
www.asimn.com
 800-262-6025

High performance made universal

M4000 is the universal system for all users who want to have as many options as possible when milling. The M4000 range can master all machining tasks with one type of indexable insert. Efficiency is also maximized due to extremely easy handling and impressive performance data across the M4000 tool family.



System insert SD ...
 - Square, positive basic shape
 - Range of grades and geometries



Leading insert LD ...
 - Rhombic, positive basic shape
 - Range of grades and geometries

Walter BLAXX



The benchmark for a new generation of milling cutters

What to determine

- Do you use indexable milling cutters currently?
- Would an increase in productivity of at least 20% be of interest to you?
- How would you like to consolidate your inventory of milling inserts?
- Can I bring a cutter in for you to test?

Four precisely 90°
cutting edges

Protected against wear by
special surface treatment

Positive cutting
characteristics

LNHU130608R-L55T
tangential indexable inserts



Powerful cut from the high volume of carbide in the direction of the cutting force combined with maximum rigidity due to the large material cross-section in the mill body.

[Click here to order
Walter Blaxx tools](#)



10 inserts per cutter body pocket
Example - Indexable end mill has 3 pockets (Z=3):
3x10=30 inserts required to receive free cutter body

Contact your local Walter FSE for requirements by
SKU



www.asimn.com
800-262-6025

Power and precision you can rely on.

The extremely robust Walter BLAXX mill bodies and the best indexable inserts in the Walter range – powered by Tiger-tec® Silver and Tiger-tec® Gold. A system with impressive properties that has long been sought after on the market by demanding machine tool operators



System insert LN ...



Helical
cutter
F5038



Helical
cutter
F5138

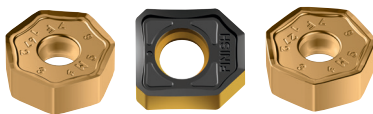


Shoulder milling
cutter
F5041



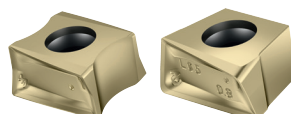
Shoulder milling
cutter
F5141

Insert XN ...



Heptagon
milling cutter
M3024

Insert LNHX/XNHX



Porcupine
milling cutter
M3255

Insert LNMX



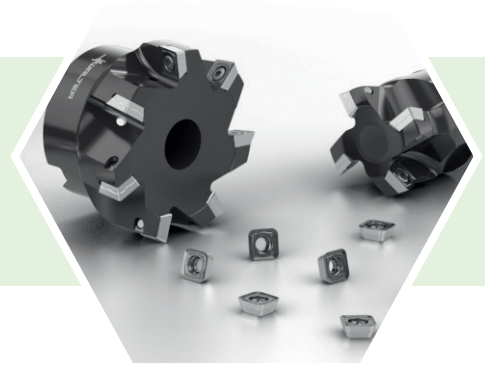
Heavy-duty
cutter
M3016



Powered by:
Tiger-tec® Gold
Tiger-tec® Silver

walter-tools.com/us

F2330



High-performance milling cutter

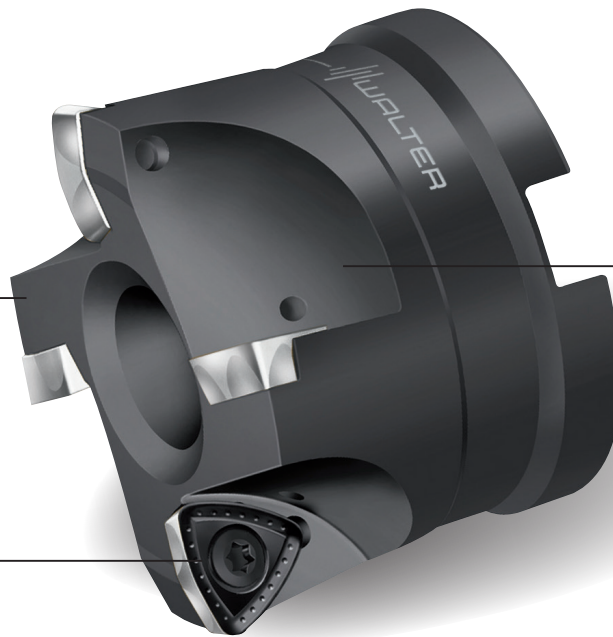
What to determine

- Do you use indexable milling cutters currently?
- Would an increase in productivity of at least 20% be of interest to you?
- How would you like to consolidate your inventory of milling inserts?
- Can I bring a cutter in for you to test?

Suitable for long projection
lengths and diameters

Lower cutting forces and
shorter chips

Optimized chip removal from
circular interpolation milling
with process reliability



Click here to
order F2330



10 inserts per cutter body pocket

Contact your local Walter FSE for requirements
by SKU

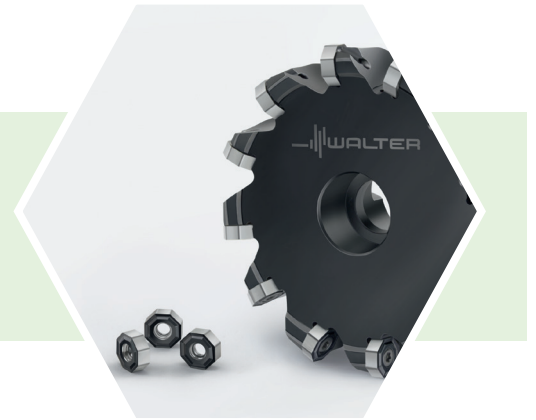
USE PROMO CODE: WalterUP

Powered by:
Tiger-tec®Gold
Tiger-tec®Silver



www.asimn.com
800-262-6025

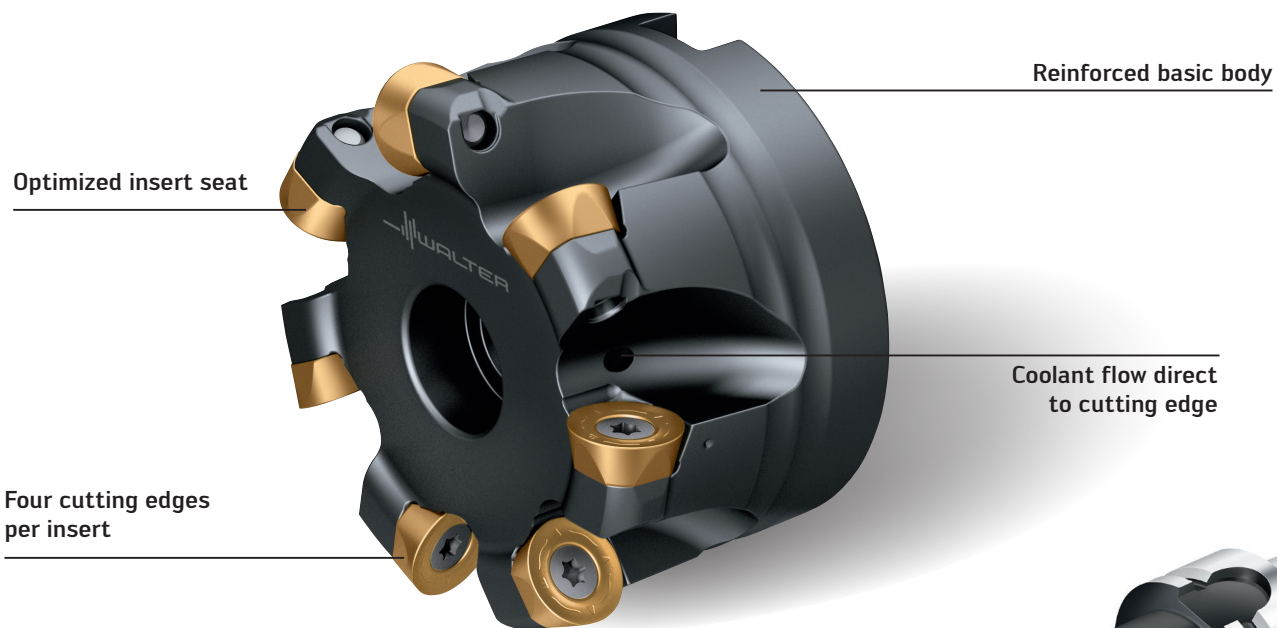
F2334R



Top performance when rough milling

What to determine

- Do you use indexable milling cutters currently?
- Would an increase in productivity of at least 20% be of interest to you?
- How would you like to consolidate your inventory of milling inserts?
- Can I bring a cutter in for you to test?



[Click here to order F2334R](#)

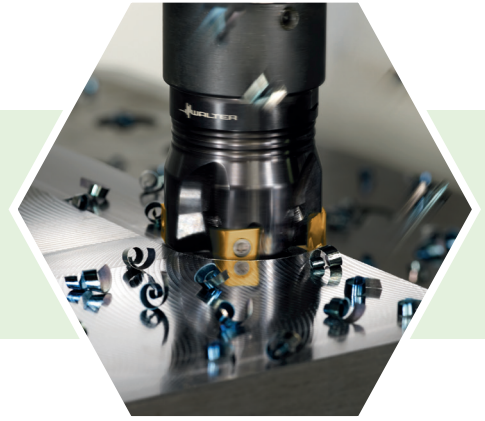


10 inserts per cutter body pocket

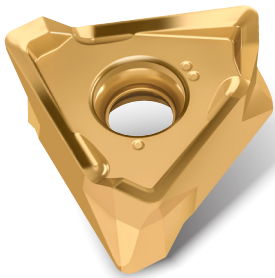
Contact your local Walter FSE for requirements by SKU

USE PROMO CODE: WalterUP

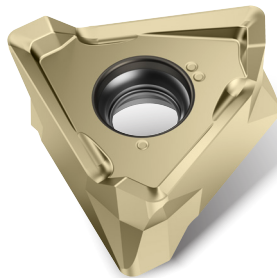
Tiger-tec® Gold



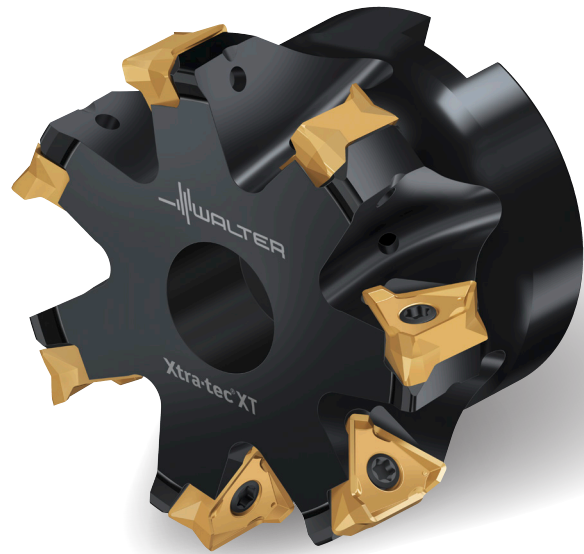
Always the perfect solution:
**INDEXABLE INSERTS WITH
CVD AND PVD COATING**



TNMU-G57 – CVD coating



TNMU-G57 – PVD coating



Xtra-tec®XT M5137 shoulder milling
cutter



tigertec-gold.walter

Tiger-tec® Gold

Efficiency-oriented businesses cannot make any compromises when it comes to milling. Customers seeking to optimize their production must not only improve their productivity, but also guarantee continuous process reliability.

This is exactly what Tiger-tec® Gold is designed for: Low wear and, as a result, optimum tool life. The result: Reliable processes, even under the toughest conditions. Customers who use Tiger-tec® Gold in their milling operations can be sure that their results will be reliable in every respect. What's more, the improved tool solution results in less downtime, which has a multiplying effect across the entire process.

The superior properties of Tiger-tec® Gold are based on several related factors.

The standout feature is the extremely tough and resistant TiAlN CVD layer, with an extremely high aluminum content. This is located directly underneath the TiN top layer and protects the substrate against abrasion, thermal cracks, plastic deformation and oxidation.

The eye-catching, gold-colored top layer enables outstanding wear detection and boasts impressive friction characteristics. Another intricate TiN layer is located between the carbide substrate and the TiAlN layer, ensuring excellent layer bonding.

Milling technology that's ahead of the game.



BCMT...-G55



ROMX...-F67



LNMU...-L55T



Xtra-tec®XT M5130 shoulder milling cutter



XNMU...-F27



XNMU...-F57



SDGT...-D57

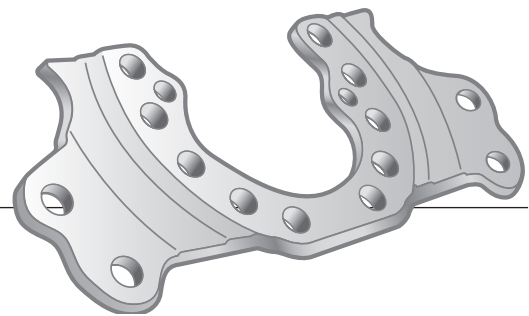


SNMX...-F57

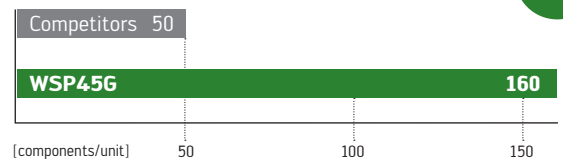
Application example Flange

Material: S690Q (1.8928) – ISO P
 Tool: M4002-080-B27-08-02
 Indexable insert: SDMX1205ZDR-E27
 Grade: WSP45G

Cutting data:	Competitors	WSP45G
v_c [sfm]	920	920
f_z [in]	.035	.044
a_p [in]	.051-.063	.051-.063
a_e [in]	1.18-1.57	1.18-1.57
v_f [in/min]	309	394



Comparison: Tool life quantity



G4014/DX18



First choice for parting off diameters up to 1.378 in.

What to determine

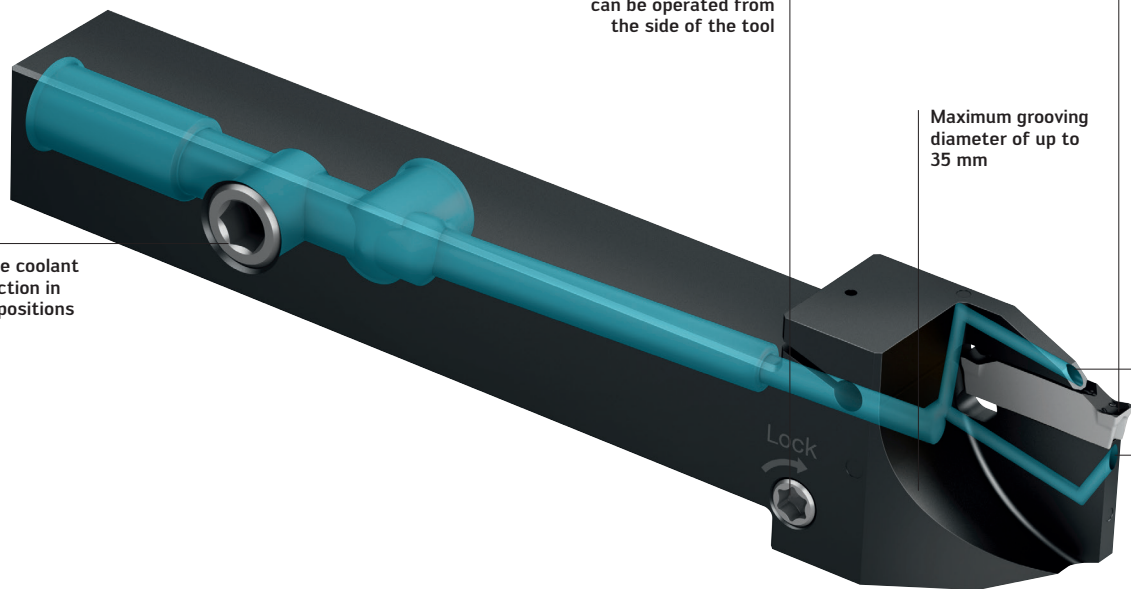
- Do you use indexable milling cutters currently?
- Would an increase in productivity of at least 20% be of interest to you?
- How would you like to consolidate your inventory of milling inserts?
- Can I bring a cutter in for you to test?

Insert widths 1.5-3 mm

Clamping screw
can be operated from
the side of the tool

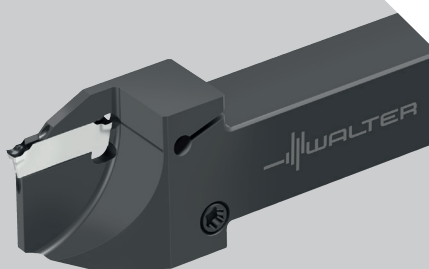
Maximum grooving
diameter of up to
35 mm

Flexible coolant
connection in
three positions



Precision cooling on
the rake and flank faces

[Click here to order
G4014/DX18](#)



Powered by:
Tiger-tec[®]Silver



www.asimn.com
800-262-6025

Non-coolant through - 10 inserts
Coolant through tool - 20 inserts

Contact your local Walter FSE for requirements
by SKU



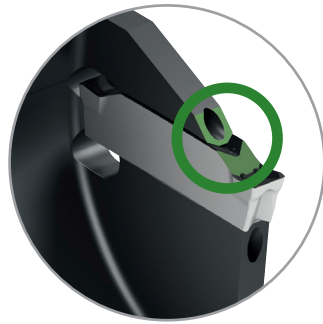
www.asimn.com
800-262-6025

Innovative parting-off system with SmartLock

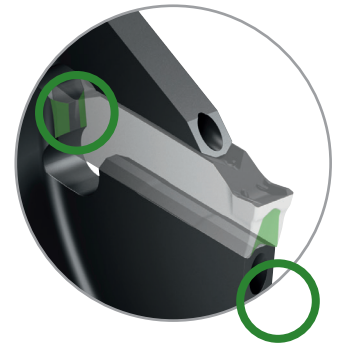
Due to its unparalleled handling benefits, the DX system is unlike any other currently available parting off system for Swiss type auto lathes and multi-spindle machines – especially where space is limited: The screw connection for insert clamping is fitted to the side instead of the usual position on the top (“SmartLock”). Only DX makes it possible to change the inserts in the machine. Because of this, the system does away with most of the change time. Attaching cooling hoses further amplifies this effect.

The technology

Raised insert design
protects the top
clamp and produces
short chips



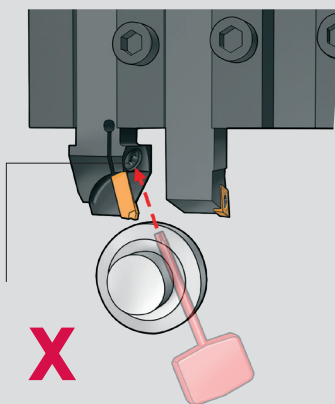
The patented positive
engagement in the
insert seat prevents
the inserts from being
incorrectly fitted



INDEXABLE INSERT CHANGEOVER

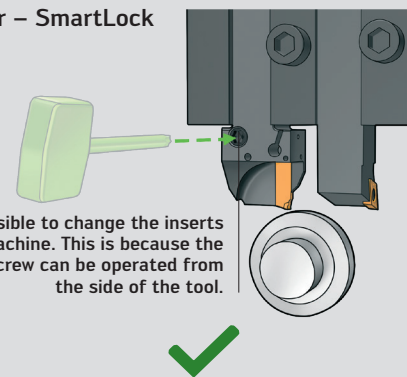
Competitors

No insert changeover
possible in the machine.
The holder has to be
removed at this point for
you to have access to
the clamping screw.



Walter – SmartLock

It is possible to change the inserts
in the machine. This is because
the clamping screw can be operated
from the side of the tool.



Walter Cut



Combined with the DX system, Walter offers four unique cutting systems for all grooving applications

What to determine

- Do you use indexable milling cutters currently?
- Would an increase in productivity of at least 20% be of interest to you?
- How would you like to consolidate your inventory of milling inserts?
- Can I bring a cutter in for you to test?



MX

Tangential arrangement enables outstanding flatness and surface quality



GX

Universal "go to" system for grooving, groove-turning, and parting off



SX

Deep grooving and parting off with internal coolant

[Click here to order Walter Cut](#)



Powered by:
Tiger-tec® Silver

**Non-coolant through - 10 inserts
Coolant through tool - 20 inserts**

Contact your local Walter FSE for requirements
by SKU



www.asimn.com
800-262-6025

One, two, or four cutting edges to maximize productivity

With the addition of the new DX system, Walter offers systems for any grooving application. From standard operations to unique solutions, with Walter grooving systems precision, production, and profitability are all achievable.

MX System

Multiply your success with four cutting edges

- Very user-friendly thanks to self-aligning tangential screw clamping
- High level of flexibility: All cutting edge variants can be used with the same toolholder
- Maximum tool life thanks to the latest Tiger-tec® Silver PVD cutting tool materials



GX System

Groove turning with cool precision

- Maximum productivity and cutting values due to optimal cooling, stability and controlled chip breaking
- Efficient parting off with two cutting edges (up to a diameter of 2.559" (65 mm))
- Best surface qualities and plane parallelism due to a long insert guide
- Shorter set-up times and greater process reliability due to omission of cooling nozzle alignment task



SX System

Parting off and slitting with new single-edged grooving system

- Maximum tool life due to new self-clamping system with positive locking
- User-friendly clamping system for fast replacement of the cutting edge
- Lower inventory costs through the use of one type of cutting insert in multiple tool variants



walter-tools.com/us

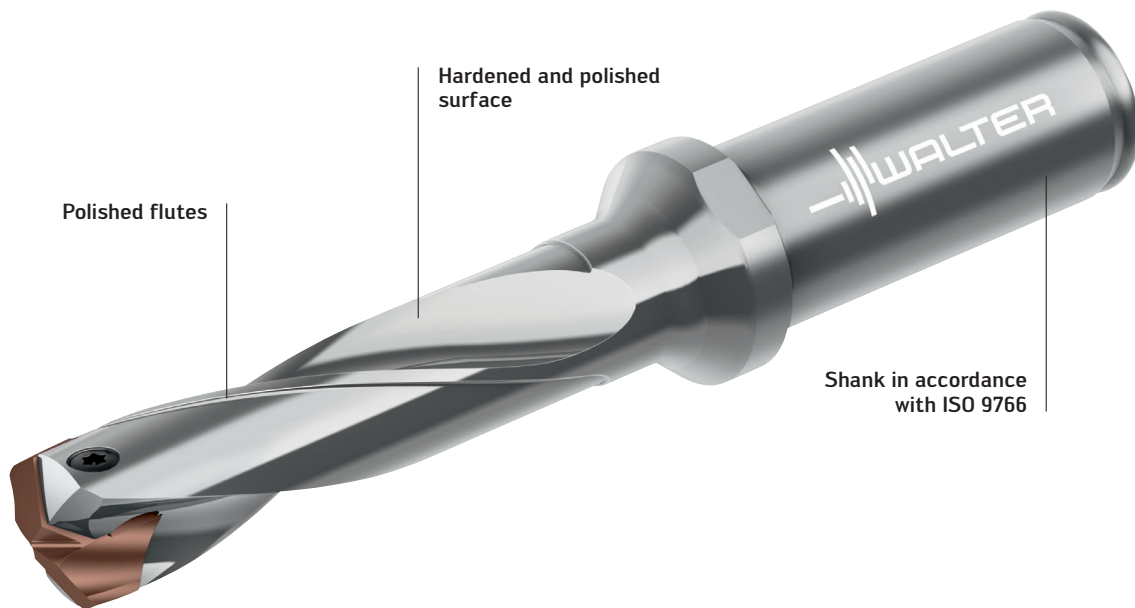
D4140



Incomparably tough under all working conditions

What to determine

- Do you use indexable milling cutters currently?
- Would an increase in productivity of at least 20% be of interest to you?
- How would you like to consolidate your inventory of milling inserts?
- Can I bring a cutter in for you to test?



[Click here to order D4140 tools](#)



P6001
WPP45C specialist
for ISO P



P6005
WKK45C specialist
for ISO K



P6003
WMP35 specialist
for ISO M and ISO S

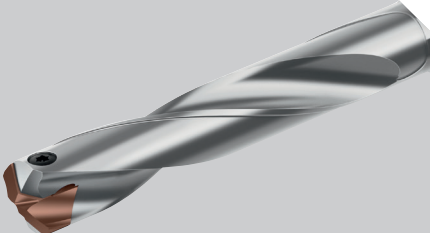


P6004
WNN25 specialist
for ISO N

4 inserts per replacable tip drill

Contact your local Walter FSE for requirements by SKU

USE PROMO CODE: WalterUP



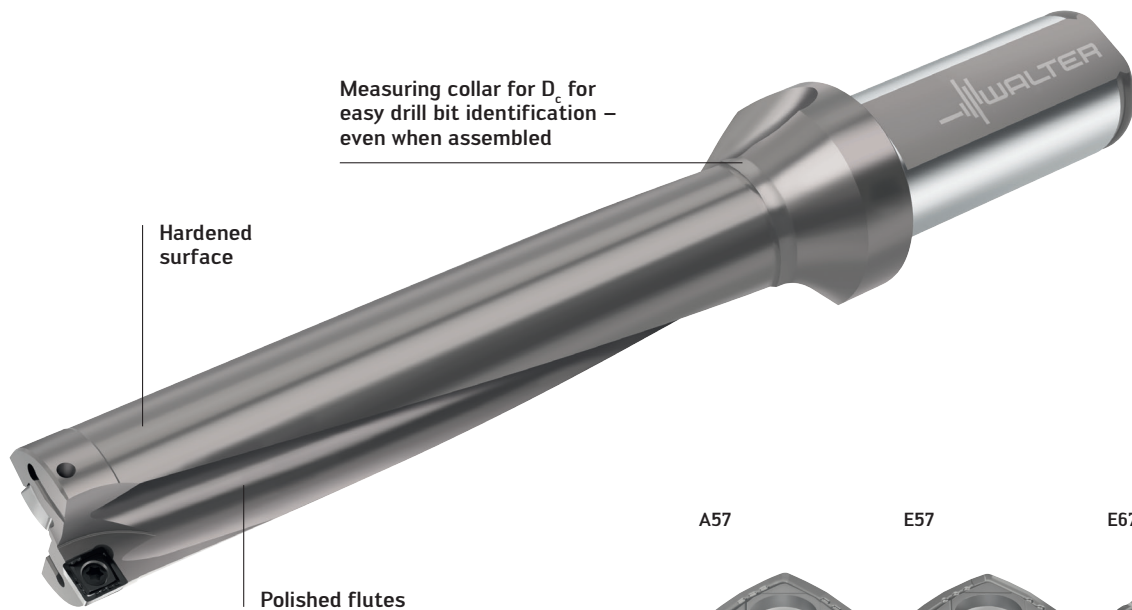
D4120



Perfect performance and precision

What to determine

- Do you use indexable milling cutters currently?
- Would an increase in productivity of at least 20% be of interest to you?
- How would you like to consolidate your inventory of milling inserts?
- Can I bring a cutter in for you to test?

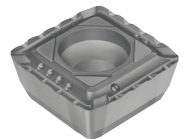
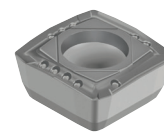
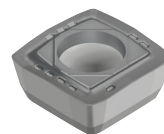


A57

E57

E67

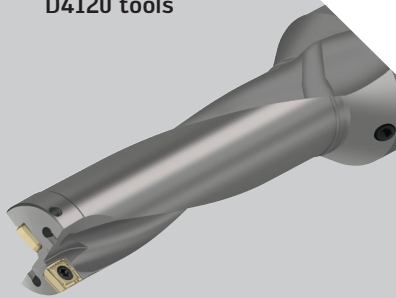
Center inserts



Outer inserts



Click here to order D4120 tools



20 inserts per indexable insert drill

Contact your local Walter FSE for requirements by SKU

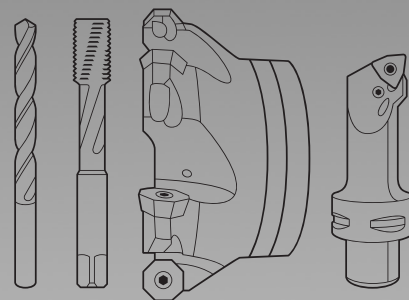
USE PROMO CODE: WalterUP

Walter USA

1510 S. Batesville Rd
Greer, SC, 29650, USA

Phone: 800-945-5554
Fax: 262-347-2500
service.us@walter-tools.com

walter-tools.com/us
facebook.com/waltertools
youtube.com/waltertools



Americas

Walter Canada
Mississauga, Canada
service.ca@walter-tools.com

Walter Mexico
El Marqués, Querétaro, México
service.mx@walter-tools.com

Walter Brazil
Sorocaba – SP, Brazil
service.br@walter-tools.com
