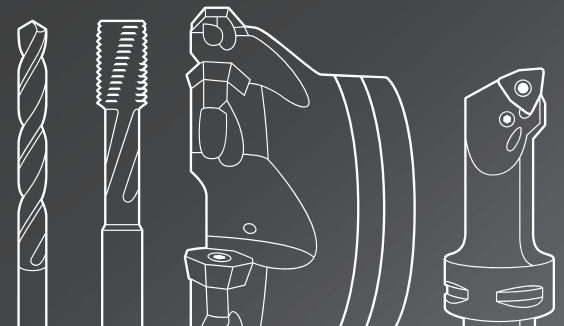




Promotion

Xtra-tec® XT

Marketing



Xtra-tec® XT



Tiger-tec® Gold

Promotion offer

Amount of teeth in tool body	Minimum order quantity of inserts
$Z \leq 4$	20
$Z \geq 5 - Z \leq 8$	50
$Z \geq 9$	100

<u>Offer:</u>	Xtra-tec® XT Milling Cutter Bodies @ 75% off list price with minimum quantity of insert purchase on each. *No other additional discounts will apply	
<u>Duration:</u>	Start Date: March 01st. 2024	End Date: June 14th. 2024 *or while supplies last
<u>How to order:</u>	Please reference discount code – XT2024 *Not Available for order via Toolshop or EDI	
<u>Scope:</u> All bodies and inserts in the following Xtra-tec® XT families:	Xtra-tec® XT face milling cutter M5004 Xtra-tec® XT face milling cutter M5009 Xtra-tec® XT face milling cutter M5011 Xtra-tec® XT face milling cutter M5012	Xtra-tec® XT shoulder milling cutter M5130 Xtra-tec® XT shoulder milling cutter M5137 Xtra-tec® XT high-feed milling cutter M5008 Xtra-tec® XT button insert milling cutter M5468 Xtra-tec® XT copy finishing milling cutter M5460
<u>Terms & Conditions:</u>	High Order Volumes: <ul style="list-style-type: none"> • For orders of more than 20 tools or 250 inserts your Walter Sales rep. must complete a high order volume template and submit to Walter USA LLC. • Delivery of all orders is subject to stock availability. For backordered tools, the promotional price will be honored as long as the PO is received before the promotion ends. 	

Xtra-tec® XT Octagon Milling Cutter M5004

Approach angle 43°

Free at the front – for ramping operations and helical interpolation

2 insert sizes
 $a_{p \max} = 3$ or 4 mm

8 cutting edges per insert

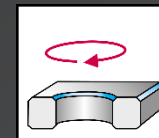
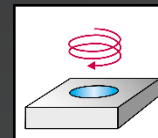
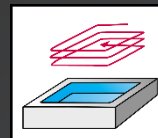
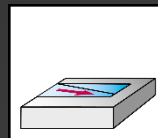
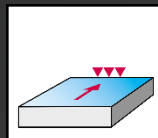
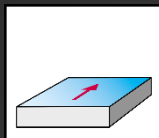


Xtra-tec® XT Octagon Milling Cutter M5004

ISO Material Groups:

P	M	K	N	S	H	O
••	••	••	••	••	•	•

Applications:



Additional Information: f_z up to .016 IPT
Wiper inserts for finishing operations

Xtra-tec® XT Octagon Milling Cutter M5004

- Highest economic efficiency due to Tiger-tec® cutting materials and high number of teeth
- Maximum process reliability due to high stability
- 3 tooth pitches for different materials and different machine concepts
- The tools can be used for different applications like face milling, helical interpolation or chamfering
- Economical cutting-edge costs due to 8 cutting edges per insert
- Very good handling thanks to improved screw accessibility



Xtra-tec® XT Face Milling Cutter M5009



Inserts SN.X0904..
and SN.X1205..

$\kappa = 45^\circ$

Inclined clamping screw

$a_{p \max} = .256''$



Xtra-tec® XT Face Milling Cutter M5011

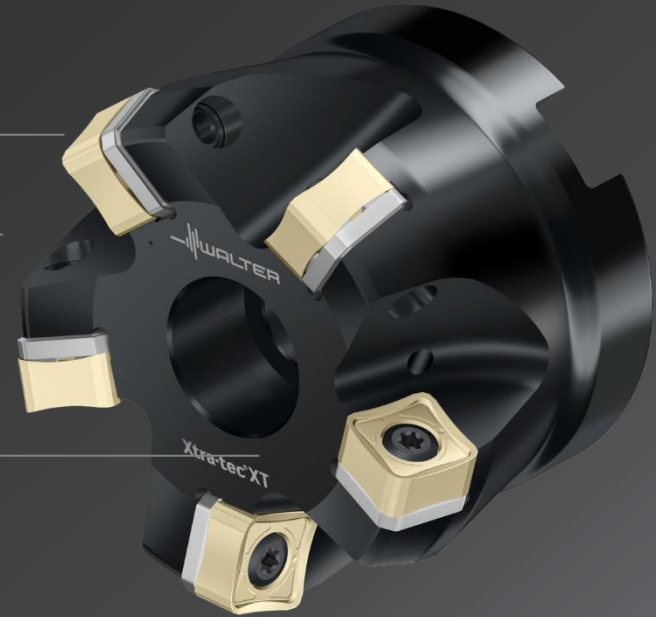


Inserts SN.X1205..

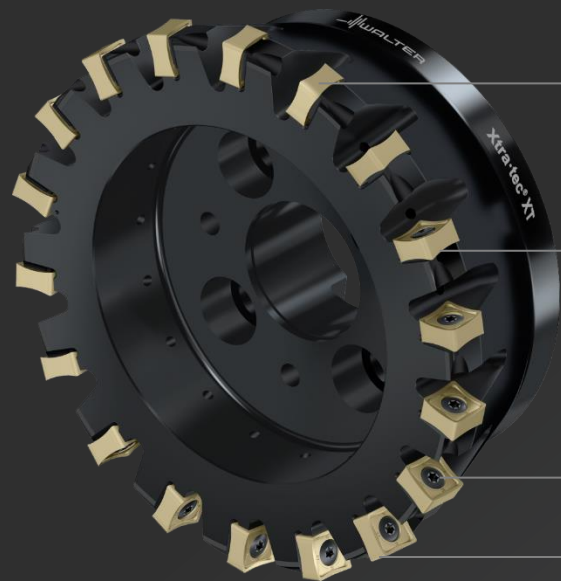
$\kappa = 75^\circ$

$a_{p \max} = 0.315''$

Inclined clamping screw



Xtra-tec® XT Face Milling Cutter M5012



Inserts SN.X0904..
and SN.X1205..

$\kappa = 88^\circ$

Inclined clamping screw

$a_{p\max} = .393''$

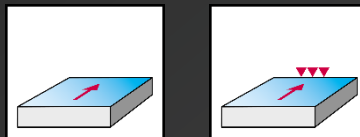


Xtra-tec® XT Face Milling Cutters M5009, M5011, M5012

ISO Material Groups:

P	M	K	N	S	H	O
••	••	••	••	••	•	•

Applications:



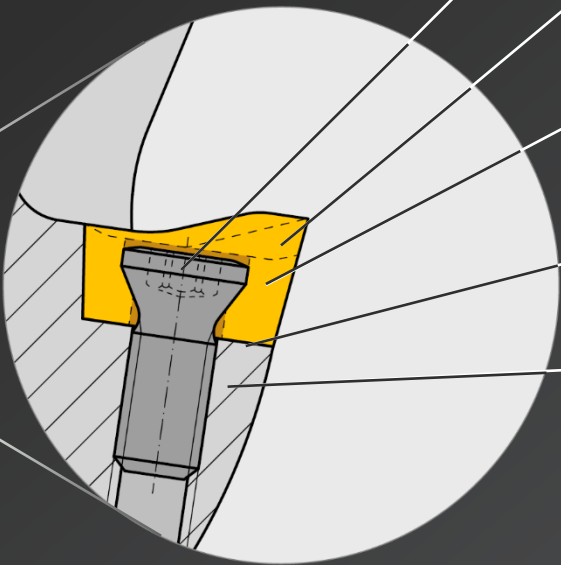
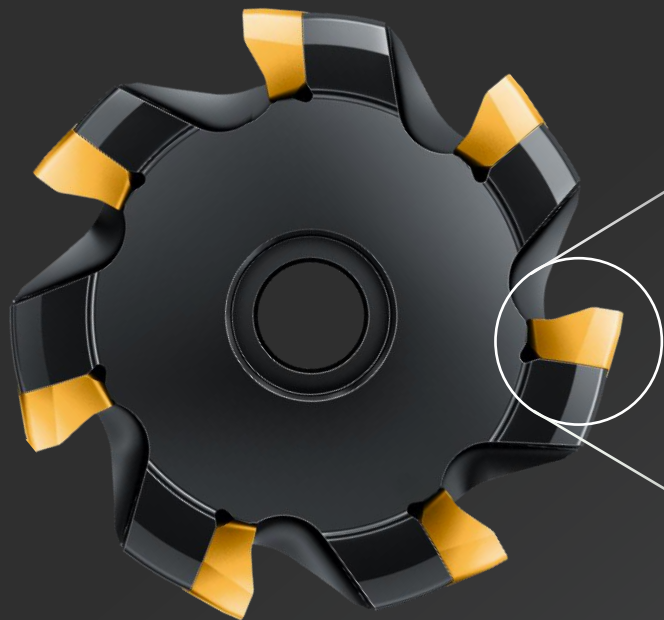
Additional Information: Wiper inserts for finishing operations

Xtra-tec® XT Face Milling Cutters M5009, M5011, M5012

- **Highest economic efficiency due to Tiger-tec® cutting materials and high number of teeth**
- **Maximum process reliability to stable, double-sided indexable inserts and carbide shim**
- **Economical cutting-edge costs due to 8 cutting edges per insert**
- **System insert SN.X1205... can be used on Xtra-tec® XT face milling cutters M5009, M5011 and M5012**
- **Very good handling thanks to improved screw accessibility**



Xtra-tec® XT Shoulder Milling Cutter M5130



Bigger penetration depth

+19%

Higher number of teeth*

+17%

Bigger intersection

+12%

More contact face

+34%

Reinforced back

+40%

* e.g. $\varnothing = 63 \text{ mm}$, $a_{p\max} = 15 \text{ mm}$

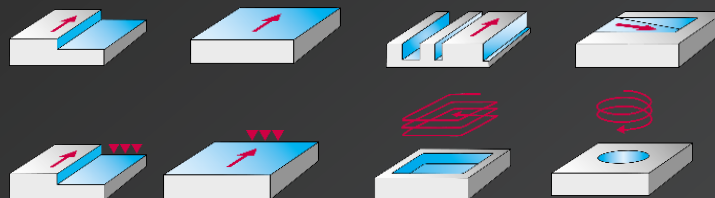
Xtra-tec® XT Shoulder Milling Cutter M5130



ISO Material Groups:

P	M	K	N	S	H	O
••	••	••	••	••	•	•

Applications:

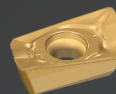


Conditions:

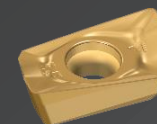
Diameter range: Inch (.500" – 6.0"), Metric (10–160 mm);
For all working conditions
R = 0,2 mm - 6,0 mm



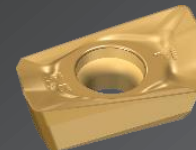
5 mm



9 mm



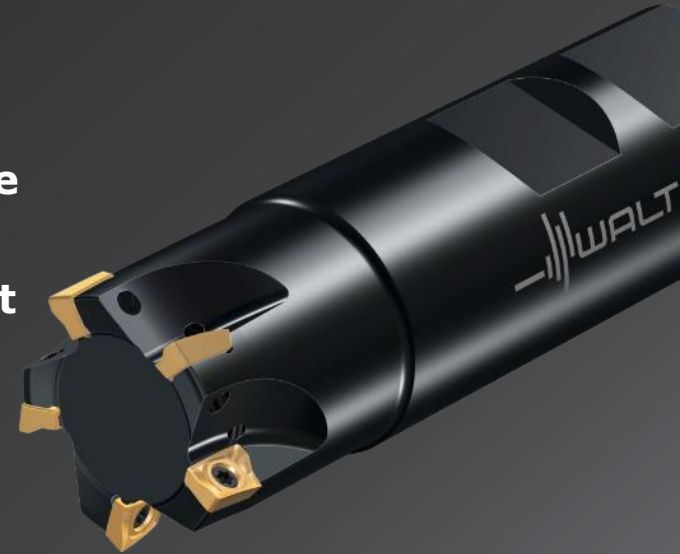
12 mm



15 mm

Xtra-tec® XT Shoulder Milling Cutter M5130

- **Highest economic efficiency due to Tiger-tec® cutting materials and high number of teeth**
- **Maximum process reliability due to high stability**
- **Avoidance of additional finishing operations due to exact 90°**
- **Optimally adapted to machining due to different insert sizes, corner radii and geometries**
- **Reduced tool costs and minimized effort due to universal applicability**
- **Very good handling thanks to improved screw accessibility**



Xtra-tec® XT Shoulder Milling Cutter M5137

Approach angle
 $\kappa = 90^\circ$

Special geometry allows
ramping operations

$a_{p\max} = .315''$
 $a_{p\max} = .197''$

Two pitches

With secondary cutting-edge
 $b = 1.6 \text{ mm (TNMU160508R)}$
 $b = 1.0 \text{ mm (TNMU11T304R)}$



Xtra-tec® XT Shoulder Milling Cutter M5137



ISO Material Groups:

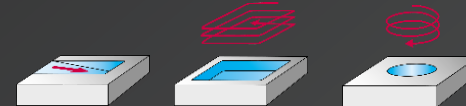
P	M	K	N	S	H	O
••	•	••		•		

Applications:

Main application

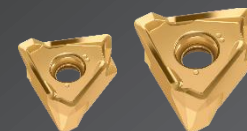


Secondary application



Conditions:

Diameter range: Inch (2.0" – 4.0"), Metric (25–100 mm)
For roughing and semi finishing operations
Universal usage
For good to medium working conditions



Xtra-tec® XT Shoulder Milling Cutter M5137

- **Lower tool costs and minimized effort thanks to universal usability**
- **Reduced tooling costs due to 6 cutting edges per indexable insert**
- **Maximum cost-efficiency thanks to high number of teeth and adapted indexable insert sizes**
- **Simple tool selection**
- **Maximum cutting speeds thanks to Tiger-tec® cutting tool materials**



Xtra-tec® XT High Feed Milling Cutter M5008

Different adaptations:

ScrewFit
Cylindrical modular
Parallel shank
Cylindrical bore

Indexable inserts in

Tiger-tec® Gold
Tiger-tec® Silver

4 cutting edges
per insert

$K = 0 - 17^\circ$



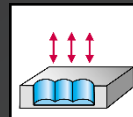
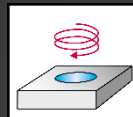
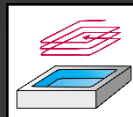
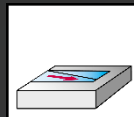
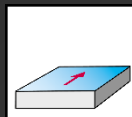
Xtra-tec® XT High Feed Milling Cutter M5008



ISO Material Groups:

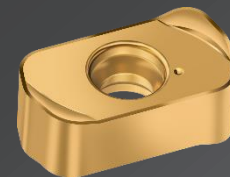
P	M	K	N	S	H	O
••	••	••		••	••	

Applications:



Additional information

- Diameter range: Inch (.625" – 2.5"). Metric (16–66 mm);
- Two pitches
- 4 cutting edges



Xtra-tec® XT High Feed Milling Cutter M5008

- **High productivity due to extremely closed pitched tools**
- **High metal removal rate due to combination of low cutting depths with high tooth feeds**
- **Reduced vibration tendency of long tools**
- **High process reliability due to stable, double-sided indexable inserts**
- **Reduced process costs due to Tiger-tec® cutting materials and 4 cutting edges**



Xtra-tec® XT Button Insert Milling Cutter M5468

four different adaptations

7 insert sizes

Free cutting

Comprehensive and
universal assortment



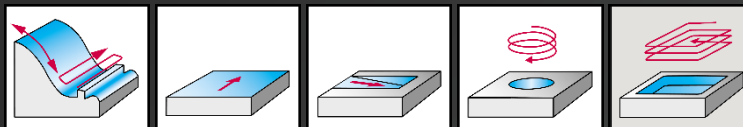
Xtra-tec® XT Button Insert Milling Cutter M5468



ISO Material Groups:

P	M	K	N	S	H	O
••	••	••	••	••	••	•

Applications:



Diameter range: Inch (1.0" – 5.0"), Metric (10 – 125 mm)

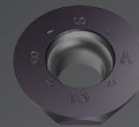
Additional Information:



Xtra-tec® XT Button Insert Milling Cutter M5468

high efficiency and low costs:

- high number of teeth
- economical cutting-edge costs due to 8 cutting edges per insert, from size 10
- new Tiger-tec® Gold cutting materials WKP35G and WSP45G
- new grade for ISO H machining WHH15X
- Comprehensive and universal assortment
- Maximum security against inadvertent twisting



Xtra-tec® XT Copy Milling Cutter M5460

Various shank designs

Internal
coolant channel

Program range
Ø 5/16" – 1-1/4"
Ø 8–32 mm

Precise cutting
geometry

Universal cutting materials
grade for hard-machining: WHH15X

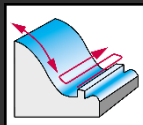


Xtra-tec® XT Copy Milling Cutter M5460

ISO Material Groups:

P	M	K	N	S	H	O
••	••	••		••	••	•

Applications:



Additional Information:

Suitable inserts P3201 and P3204
Compressed air or MQL supply through the internal coolant channel

Xtra-tec® XT Copy Milling Cutter M5460

- **Maximum process reliability during finish machining**

Optimized chip removal due to compressed air or MQL supply through the internal coolant channel.

- **Special grade for hard machining up to 63HRC**

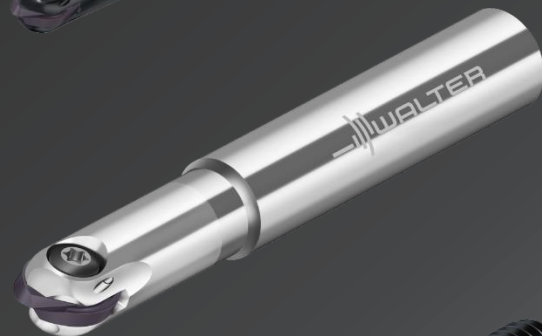
Existing high-performance cutting grade WHH15X enables highest wear resistance and tool life. The customer saves money.

- **Best surface quality and highest precision**

due to a double-edged, periphery-ground exchangeable insert. Less manual rework necessary

- **Universally applicable program range**

Five different tool adaptations, existing P32.. inserts with cutting materials for ISO classes P, M, K, S and H





Engineering Kompetenz



ABRASIVE SPECIALISTS INC.

1202 98th Avenue NE · Blaine, MN 55434

763.571.4111 FAX 763.571.5026

