

high penetration  
**DRILLING KITS**

[www.alliedmachine.com](http://www.alliedmachine.com)

**T-A PRO<sup>®</sup> DRILL**

*save more on inserts and holders*



A *foundational* cutting tool solution for a *wide range* of hole sizes.



Cost savings over buying individual components.



Broad selection of diameter ranges.

 **ALLIED MACHINE & ENGINEERING**  
[www.alliedmachine.com](http://www.alliedmachine.com)

 **ABRASIVE SPECIALISTS INC.**  
[www.asimn.com](http://www.asimn.com)



**20%  
SAVINGS  
ON HOLDER  
BUNDLES**



## HOLDER KITS FOR T-A PRO

- Three holders covering a diameter range of 0.4999" - 1.3797" (12.70 mm - 35.04 mm).
- Available in 3xD and 5xD as well as flat and cylindrical shanks.
- Optimized flute design for increased chip evacuation.
- Proprietary coolant outlet configuration for superior performance even in low coolant applications (200 psi).

### Imperial 3xD Holder Kits

	Series	Length	Drill Depth	Shank Diameter	Qty
i	0-A	3xD	1.809	0.750	1
	1-A	3xD	2.475	1.000	1
	2-A	3xD	3.513	1.250	1

### Imperial 5xD Holder Kits

	Series	Length	Drill Depth	Shank Diameter	Qty
i	0-A	5xD	3.015	0.750	1
	1-A	5xD	4.125	1.000	1
	2-A	5xD	5.855	1.250	1

### Metric 3xD Holder Kits

	Series	Length	Drill Depth	Shank Diameter	Qty
m	0-A	3xD	45.9	20	1
	1-A	3xD	62.9	25	1
	2-A	3xD	89.2	32	1

### Metric 5xD Holder Kits

	Series	Length	Drill Depth	Shank Diameter	Qty
m	0-A	5xD	76.6	20	1
	1-A	5xD	104.8	25	1
	2-A	5xD	148.7	32	1

HTA03F-KIT
<b>Flanged with flat</b>
HTA0A03-075F
HTA1A03-100F
HTA2A03-125F

HTA03C-KIT
<b>Cylindrical (no flat)</b>
HTA0A03-075C
HTA1A03-100C
HTA2A03-125C

HTA05F-KIT
<b>Flanged with flat</b>
HTA0A05-075F
HTA1A05-100F
HTA2A05-125F

HTA05C-KIT
<b>Cylindrical (no flat)</b>
HTA0A05-075C
HTA1A05-100C
HTA2A05-125C

HTA03FM-KIT
<b>Flanged with flat</b>
HTA0A03-20FM
HTA1A03-25FM
HTA2A03-32FM

HTA03CM-KIT
<b>Cylindrical (no flat)</b>
HTA0A03-20CM
HTA1A03-25CM
HTA2A03-32CM

HTA05FM-KIT
<b>Flanged with flat</b>
HTA0A05-20FM
HTA1A05-25FM
HTA2A05-32FM

HTA05CM-KIT
<b>Cylindrical (no flat)</b>
HTA0A05-20CM
HTA1A05-25CM
HTA2A05-32CM

i = Imperial (in)  
m = Metric (mm)

# INSERT KITS FOR T-A PRO

- Includes 12 commonly used diameters.
- ISO-specific geometry carbide options in P, K, N or M for simplified insert choices.
- Also available in a high-speed steel, X, substrate and geometry option to tackle a range of materials.

**40%  
SAVINGS  
ON INSERT  
BUNDLES**



## Imperial Insert Kit

Series	Fractional	Diameter		Qty
		inch	mm	
0-A	1/2	0.5000	12.70	2
0-B	9/16	0.5626	14.29	2
0-C	5/8	0.6252	15.88	2
0-D	11/16	0.6874	17.46	2
1-B	3/4	0.7500	19.05	2
1-C	13/16	0.8126	20.64	2
1-C	7/8	0.8752	22.23	2
1-D	15/16	0.9374	23.81	2
2-B	1	1.0000	25.40	2
2-C	1-1/8	1.1252	28.58	2
2-D	1-1/4	1.2500	31.75	2
2-D	1-3/8	1.3752	34.93	2

TAP-IMP-KIT
P
TAP0-12.70
TAP0-14.29
TAP0-15.88
TAP0-17.46
TAP1-19.05
TAP1-20.64
TAP1-22.23
TAP1-23.81
TAP2-25.40
TAP2-28.58
TAP2-31.75
TAP2-34.93

TAK-IMP-KIT
K
TAK0-12.70
TAK0-14.29
TAK0-15.88
TAK0-17.46
TAK1-19.05
TAK1-20.64
TAK1-22.23
TAK1-23.81
TAK2-25.40
TAK2-28.58
TAK2-31.75
TAK2-34.93

TAN-IMP-KIT
N
TAN0-12.70
TAN0-14.29
TAN0-15.88
TAN0-17.46
TAN1-19.05
TAN1-20.64
TAN1-22.23
TAN1-23.81
TAN2-25.40
TAN2-28.58
TAN2-31.75
TAN2-34.93

TAM-IMP-KIT
M
TAM0-12.70
TAM0-14.29
TAM0-15.88
TAM0-17.46
TAM1-19.05
TAM1-20.64
TAM1-22.23
TAM1-23.81
TAM2-25.40
TAM2-28.58
TAM2-31.75
TAM2-34.93

TAX-IMP-KIT
X
TAX0-12.70
TAX0-14.29
TAX0-15.88
TAX0-17.46
TAX1-19.05
TAX1-20.64
TAX1-22.23
TAX1-23.81
TAX2-25.40
TAX2-28.58
TAX2-31.75
TAX2-34.93

## Metric Insert Kit

Series	Fractional	Diameter		Qty
		inch	mm	
0-A	—	0.5118	13.00	2
0-B	—	0.5512	14.00	2
0-C	—	0.6299	16.00	2
0-D	—	0.6890	17.50	2
1-A	—	0.7087	18.00	2
1-B	—	0.7874	20.00	2
1-C	—	0.8661	22.00	2
1-D	—	0.9449	24.00	2
2-A	63/64	0.9843	25.00	2
2-C	—	1.1811	30.00	2
2-D	—	1.2598	32.00	2
2-D	—	1.3780	35.00	2

TAP-MET-KIT
P
TAP0-13.00
TAP0-14.00
TAP0-16.00
TAP0-17.50
TAP1-18.00
TAP1-20.00
TAP1-22.00
TAP1-24.00
TAP2-25.00
TAP2-30.00
TAP2-32.00
TAP2-35.00

TAK-MET-KIT
K
TAK0-13.00
TAK0-14.00
TAK0-16.00
TAK0-17.50
TAK1-18.00
TAK1-20.00
TAK1-22.00
TAK1-24.00
TAK2-25.00
TAK2-30.00
TAK2-32.00
TAK2-35.00

TAN-MET-KIT
N
TAN0-13.00
TAN0-14.00
TAN0-16.00
TAN0-17.50
TAN1-18.00
TAN1-20.00
TAN1-22.00
TAN1-24.00
TAN2-25.00
TAN2-30.00
TAN2-32.00
TAN2-35.00

TAM-MET-KIT
M
TAM0-13.00
TAM0-14.00
TAM0-16.00
TAM0-17.50
TAM1-18.00
TAM1-20.00
TAM1-22.00
TAM1-24.00
TAM2-25.00
TAM2-30.00
TAM2-32.00
TAM2-35.00

TAX-MET-KIT
X
TAX0-13.00
TAX0-14.00
TAX0-16.00
TAX0-17.50
TAX1-18.00
TAX1-20.00
TAX1-22.00
TAX1-24.00
TAX2-25.00
TAX2-30.00
TAX2-32.00
TAX2-35.00

**i** = Imperial (in)  
**m** = Metric (mm)



# WHY SHOULD YOU GET OUR KITS?

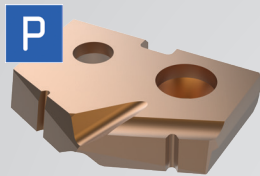
- Serves as an introduction to the T-A Pro product line while offering a solution to drill a range of common industry diameters.
- Opportunity to expand into smaller or larger diameters as well as depths from stub to 15xD with T-A Pro's full diameter range (0.3739" - 1.8820" (9.50 mm - 47.80 mm)).
- Combines exceptional penetration capabilities and versatility across a wide range of sizes, providing efficiency and value for a variety of applications.
- Ready-to-use solution ideal for customers looking to maximize their investment on a recently purchased a CNC machine.



**T-A PRO MATERIAL LIBRARY:**  
SEE IT IN ACTION.

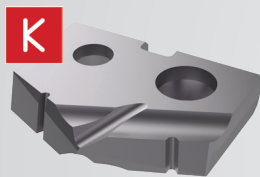
## REDESIGNED INSERTS

Ø 0.3739" - 1.8820" (9.50 mm - 47.80 mm)



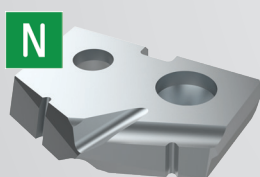
### STEELS

- Designed to provide increased penetration rates and tool life in steel applications.
- Excellent chip control with superior geometry and edge.
- Increased heat resistance and improved tool life with Allied's multilayer AM300® coating.



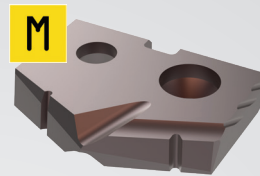
### CAST IRONS

- Uniquely designed for cast/nodular iron applications.
- Geometry that provides maximum tool life, reduced exit burr, and improved hole finish.
- Increased abrasion resistance and tool life with Allied's multilayer TiAlN coating.



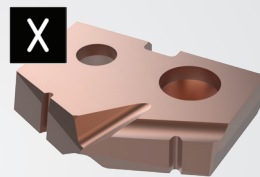
### NONFERROUS

- Designed for applications in aluminum, brass, and copper.
- Geometry that yields excellent chip control in these softer materials.
- TiCN coating for versatility to run in a variety of materials while reducing buildup.



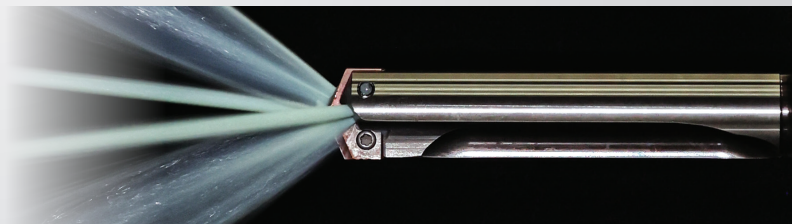
### STAINLESS STEEL

- Designed for all stainless steels and heat resistant super alloy (HRSA) materials.
- Optimized geometry for improved chip formation while minimizing exit burr.
- Industry leading tool life in stainless and HRSA materials with Allied's new AM460 coating.



### SUBSTRATE FROM HIGH-SPEED STEEL

- Multipurpose geometry engineered for a wide range of materials.
- Reliable tool life and high process repeatability in the most challenging applications.
- Excellent heat resistance and high lubricity for broad scope use with Allied's multilayer AM200® coating.



CONTACT YOUR LOCAL ALLIED FIELD SALES ENGINEERS (FSES) FOR ASSISTANCE WITH ANY APPLICATION.

COLE SHIPMAN | (612) 759-0505 • cshipman@alliedmachine.com  
KEVIN LILLQUIST | (218) 341-4859 • klillquist@alliedmachine.com

Allied Machine offers expert engineering support. Whether you need a quote, a test, or an application solution, a highly skilled and trained engineer is standing by, ready to help.  
[www.alliedmachine.com/contactus](http://www.alliedmachine.com/contactus)

Copyright © 2025 Allied Machine and Engineering Corp. – All rights reserved.  
All trademarks designated with the ® symbol are registered in the United States and other countries.



**WOHLHAUPTER®**  
Holmaking Solutions for Today's Manufacturing